

High Pressure Decorative Laminate and Solid Phenolic Toilet Compartments



10 Toilet & Shower Compartments



Solid Phenolic Core Toilet Compartments



Tex-Lam's Phenolic Core Toilet Compartments are an excellent choice when increased durability is required. Solid phenolic materials are water-resistant, graffiti resistant and will not rust or delaminate. They are highly resistant to general abuses found in schools, public stadiums or commercial applications and provide you a wide range of color selection. The lead-time for phenolic core partitions is four to six weeks depending on the laminate manufacturer's ability to expedite delivery of the core material.

Tex-Lam's solid phenolic core panels are composed of melamine-impregnated decorative surface papers that are fused under extreme heat and pressure with a varying number of phenolic resin saturated kraft core papers. Phenolic core fire resistance meets ASTM E-84 requirements. Our standard product has a Class "B" fire rating with a flame spread index of 35 and smoke at 100. The end product is an excellent material for use in high abuse areas and is virtually unaffected by moisture. More detailed information is available on our website at www.texlam.com

Panels

Standard panels will be a minimum 1/2" thick solid phenolic core* with high-pressure melamine matte finish surface made as an integral part of the core material. All edges are polished smooth with 1/16" radius corners. All panels are constructed with a solid black core.

**Additional core thicknesses available upon request*

Pilasters & Doors

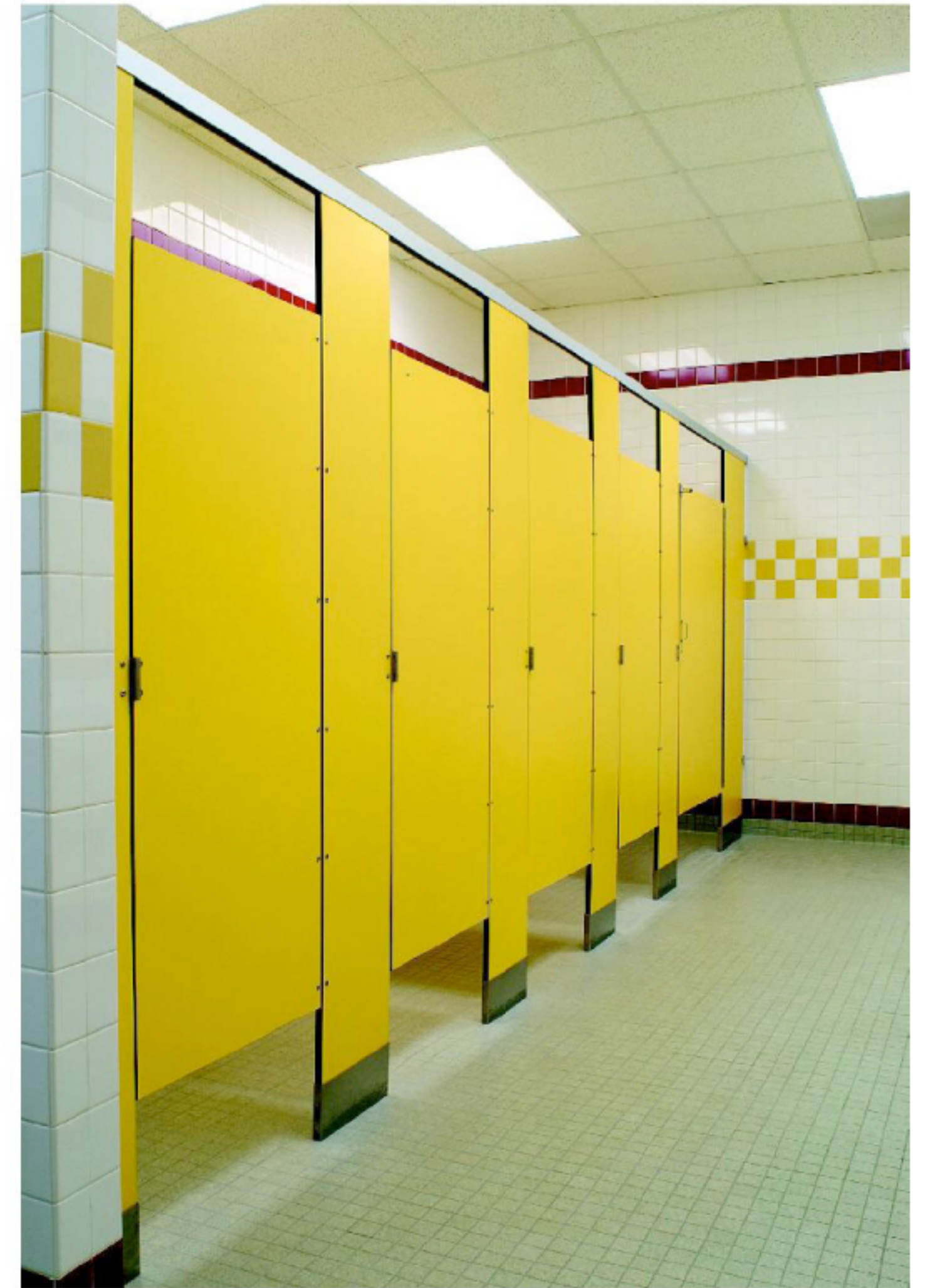
Standard pilasters and doors are a minimum of 3/4" thick solid phenolic core* with high-pressure melamine matte finish surface made as an integral part of the core material. All edges are polished smooth with 1/16" radius corners. All panels are constructed with a solid black core. The mounting bracket for all styles is a 3/8" X 1" aluminum bar, which is mounted with internal fasteners into the pilaster. (All structural support members are to be provided by others). Pilasters are furnished with an 18-gauge (type 304) stainless steel shoe to conceal the mounting devices.

**Additional core thicknesses available upon request*

Hardware

Each compartment is furnished with stainless steel hinges, latch, stop and keeper, coat hook and bumper, brackets and all necessary fittings and fasteners for a complete installation. Hinges are 18-gauge surface-mounted continuous piano hinges 2" wide with a 1/8" diameter pin (type 304) in a satin finished stainless steel to run the full height of the door, non-handed, with no cam action. Latching is accomplished by means of a surface mounted 11-gauge stainless steel slide latch. Mounting brackets are stamped 14-gauge (type 304) satin finish stainless steel. All fasteners are of stainless steel.

If our standard hardware does not meet your project specification, we offer an optional Series 500 – stainless steel heavy-duty institutional hardware. Series 500 hinges are 18-gauge surface-mounted continuous piano hinges 2" wide with an 1/8" diameter pin (type 304) in a satin finish stainless steel to run the full height of the door, non-handed, with no cam action. Latching is accomplished by means of a surface-mounted 11-gauge stainless steel slide latch, which latches into an 11-gauge heavy-duty keeper. Doors are furnished with two powder coated 14-gauge doorstops. A stainless steel coat hook and bumper are furnished with each door. The 18-gauge stainless steel wall brackets are hemmed to form a continuous "T" or "L" bracket for maximum mounting strength.



High Pressure Decorative Laminate Toilet Compartments



Tex-Lam has been manufacturing custom High Pressure Decorative Laminate Toilet Compartments since 1970. Our products are manufactured to the highest quality standards using only the best raw materials.

We employ state of the art precision machinery and a veteran workforce to assure your specifications are met.

Our lead times are structured to meet the rapid requirements the construction industry demands. At Tex-Lam, we pride ourselves on our courteous and professional treatment during the order process to insure that you receive unequalled value. Visit us on the web at

www.texlam.com

Doors

All doors have a standard finished thickness of 7/8", laminated with .050 High Pressure Decorative Laminate (HPDL) meeting or exceeding NEMA LD 3 - 2000 standards.* The doors are bonded under pressure with an approved adhesive to a solid core of 45 lb. density industrial grade particleboard.** All edges and faces are laminated with the same grade high pressure decorative laminate. The edges are laminated first and faces laminated last to seal all edges and achieve maximum protection from moisture.

**Optional 1" thickness is available*

***Optional Plywood Core is available*

Panels

Standard panels are a finished thickness of 7/8", laminated with .050 High Pressure Decorative Laminate meeting or exceeding NEMA LD 3 - 2000 standards.* The panels are bonded under pressure with an approved adhesive to a solid core of 45 lb. density industrial grade particleboard.** All edges and faces are laminated with the same grade high pressure decorative laminate. The edges are laminated first and faces laminated last to seal all edges and achieve maximum protection from moisture.

**Optional 1" thickness is available*

***Optional Plywood Core is available*

Pilasters

Standard pilasters are 1 1/4" thick, laminated with .050 High Pressure Decorative Laminate meeting or exceeding NEMA LD 3 - 2000 standards. The pilasters will be bonded under pressure with an approved adhesive to a solid core of 45 lb. density industrial grade particleboard.* All edges and faces are of the same grade plastic laminate. The edges will be laminated first and faces laminated last to seal all edges and achieve maximum protection from moisture. The mounting bracket for all styles is a 3/8" X 1" aluminum bar, which is mounted with internal fasteners into the pilaster. The optional steel core will have the 3/8" X 1" steel bar welded to the 11 gauge steel plate, which is sandwiched into the pilaster to insure maximum strength. The pilasters are furnished with an 18-gauge (type 304) stainless steel shoe 4" in height. (All structural elements for ceiling hung (CHF) partitions and blocking

are furnished by others)

**Optional Plywood Core is available*

Hardware

Each compartment is furnished with hinges, latch, stop and keeper, coat hook and bumper, brackets and all necessary fittings and fasteners for a complete installation. All overhead braced compartments are furnished with a heavy duty, anti-grip aluminum headrail.



Solid Surface Toilet Compartments



Tex-Lam's solid surface compartments are recommended for decorative and functional applications where a prestigious appearance, high stain resistance and ease of maintenance is desired.

Our solid surface compartments are manufactured using 1/8" Acrystone® solid surface bonded to a MDF substrate. All edges are sealed yielding a solid monolithic appearance.

Solid Surface Toilet Compartments

All compartment material is manufactured of a non-porous Acrystone® solid surfacing material. Acrystone® solid surface 1/8" (3mm) sheets and edge strips are manufactured with acrylic resins, ATH(aluminum tri-hydrate – a flame retardant mineral), and exclusive pigments and particulates. All Acrystone® Solid Surface panels, pilasters and doors are composed of medium density fiberboard bonded on all sides and edges. Faces are bonded under pressure with 7 wet mils of non-flammable vinyl acetate rigid set adhesive. All edges are bonded physically and chemically with an approved adhesive in conjunction with solid surface seam adhesive to make seams inconspicuous. All panels, pilasters and doors are a 1" finished thickness. Stainless steel hardware is standard. This product is moisture resistant, non-porous and can be sanded to hide graffiti and scratches. Multiple design selections are available



Specialty Toilet Compartments

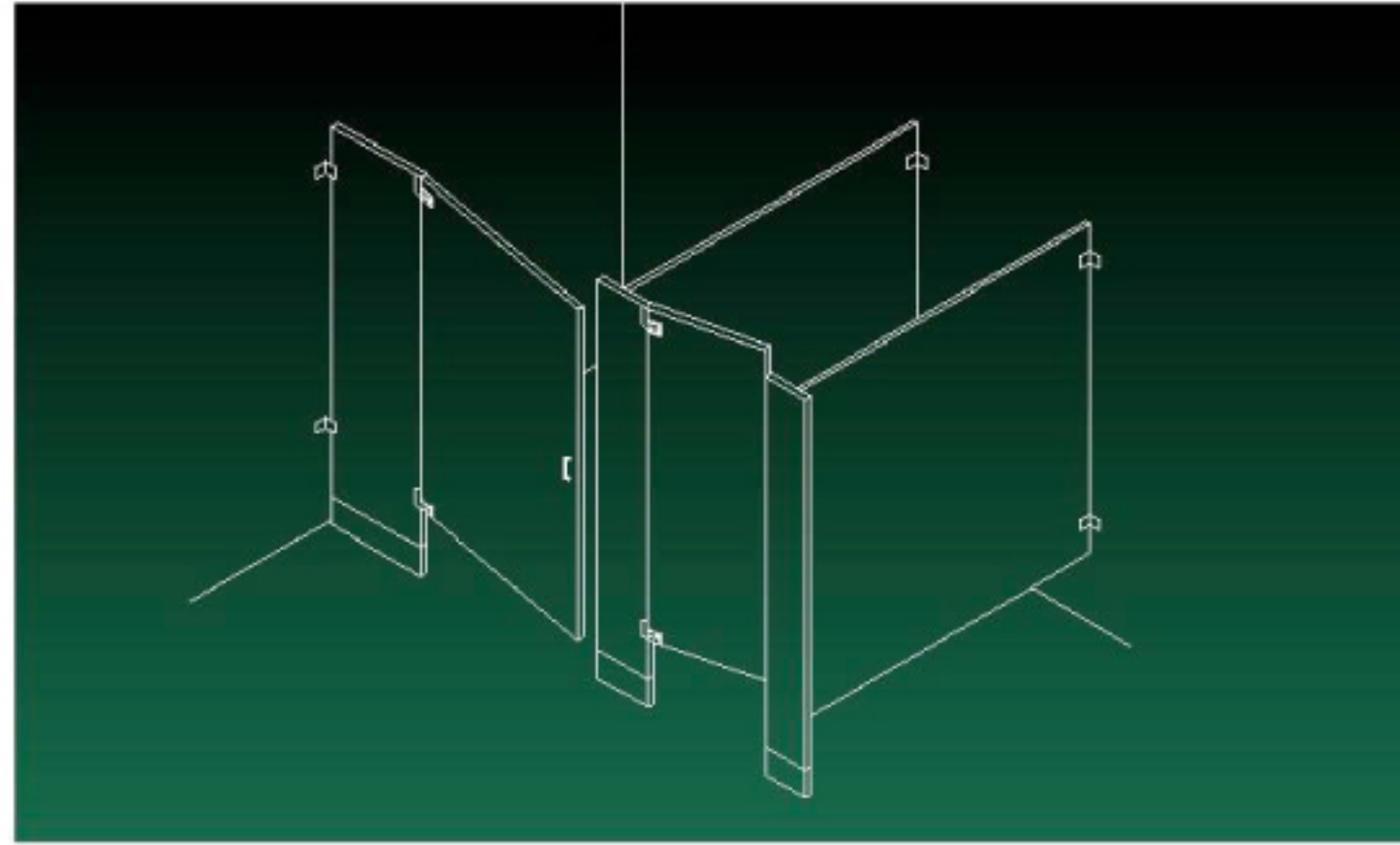
When your project requires designs that represent "thinking outside the box" we can provide the expertise you need. Our manufacturing process allows you the ability to develop special one of a kind designs with premier upscale appearances. Our staff will assist you from beginning to end to assure you have a quality ADA compliant compartment that makes the ordinary, extraordinary. Contact us for more information on our specialty toilet compartment program.



Styles of Support for Toilet Compartments

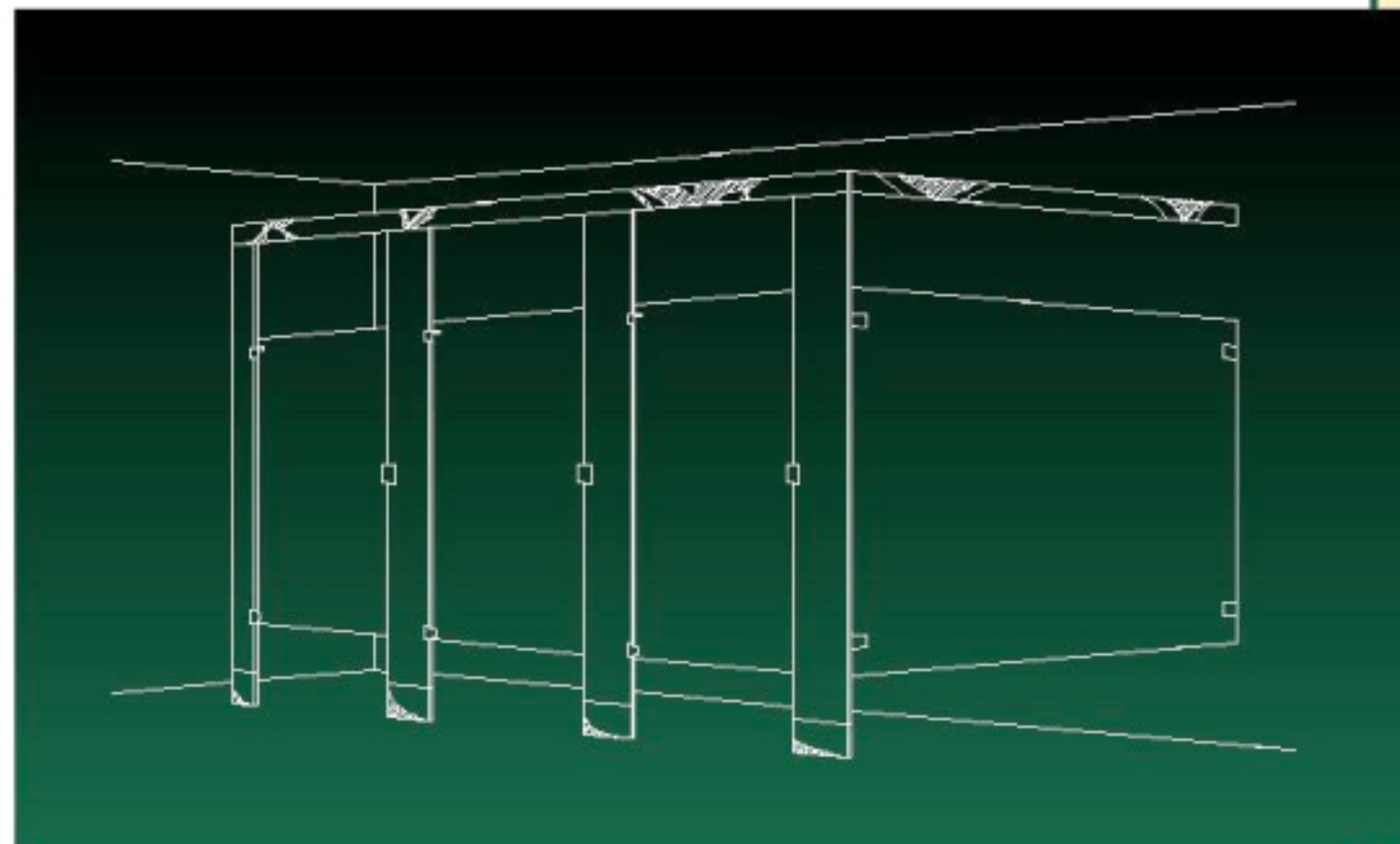
Floor Supported Model XLF

This style of compartment is designed to compliment nearly any architectural scheme. While it is not quite as rigid as Model XLFH Overhead Braced compartments it does provide adequate strength to withstand use in most office and commercial buildings.



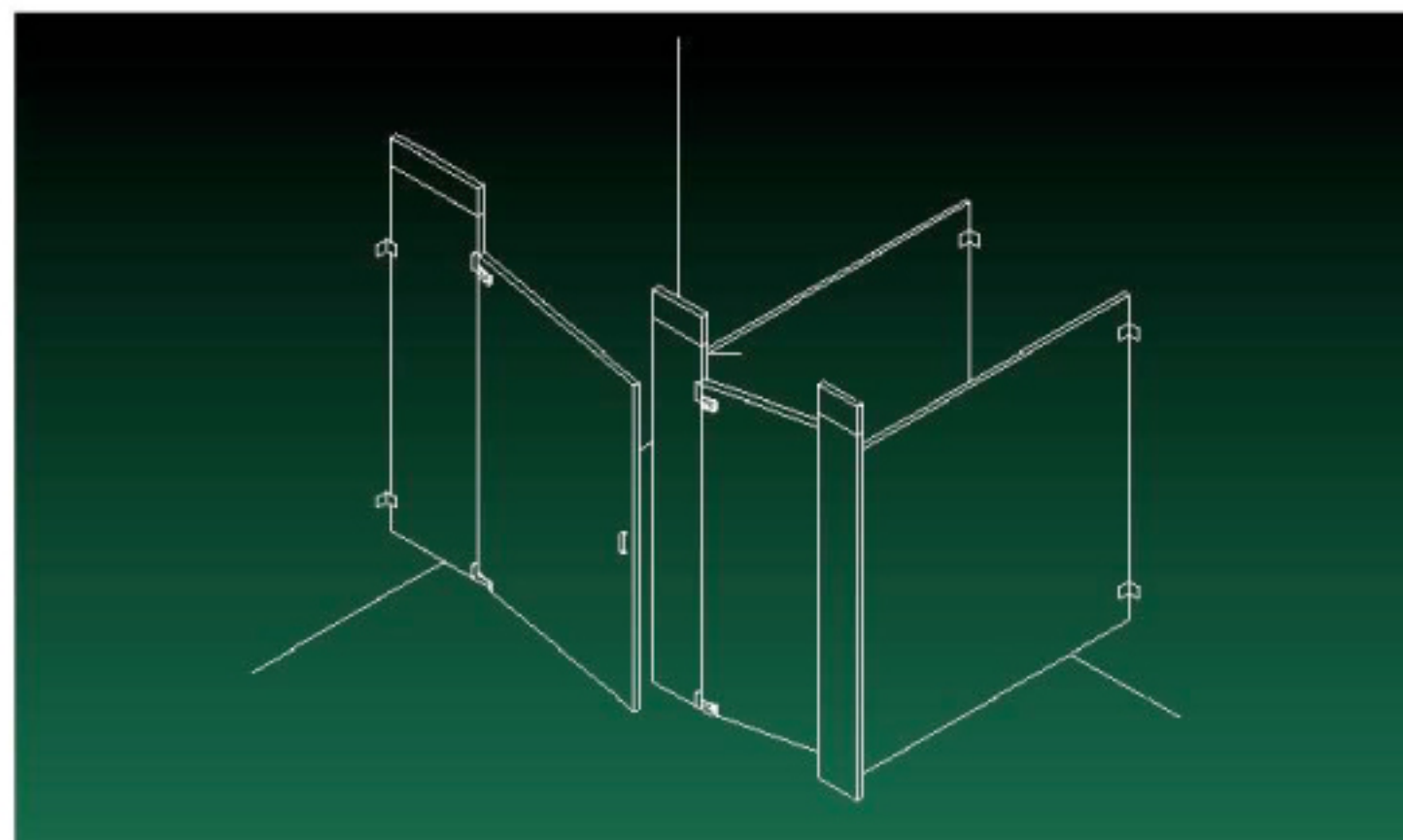
Overhead Braced Model XLFH

This style of compartment is the most rigid model available. It is recommended for areas where abusive treatment may be expected such as schools, restaurants and other rest-rooms open to the general public. The extra support of the overhead bracing substantially increases the life of the stalls where potential abuse may be a problem. As with our other stall configurations Model XLFH can be specified with any of the optional hardware or 11 gauge steel core pilasters.



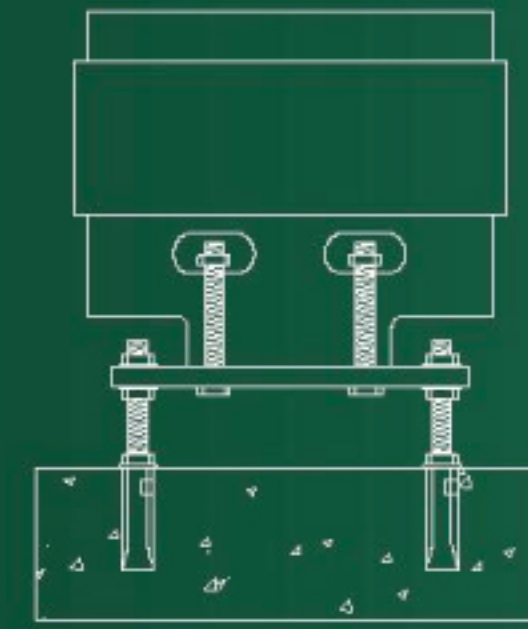
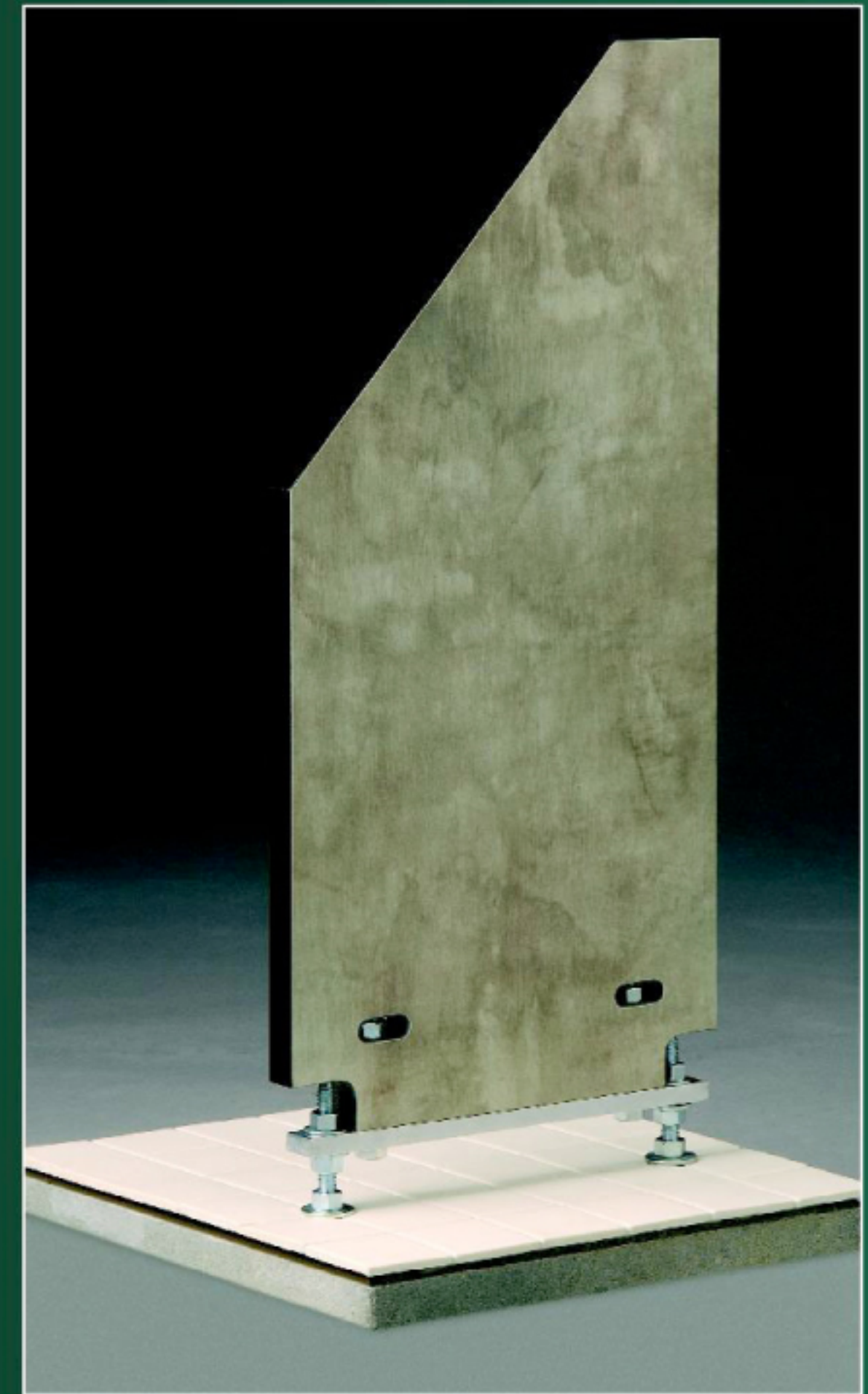
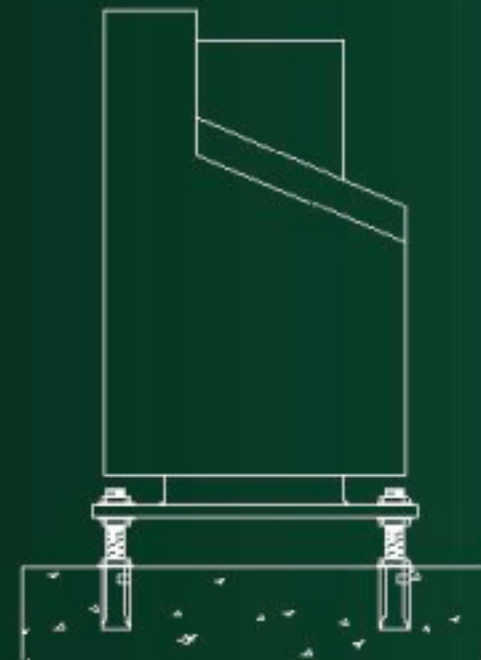
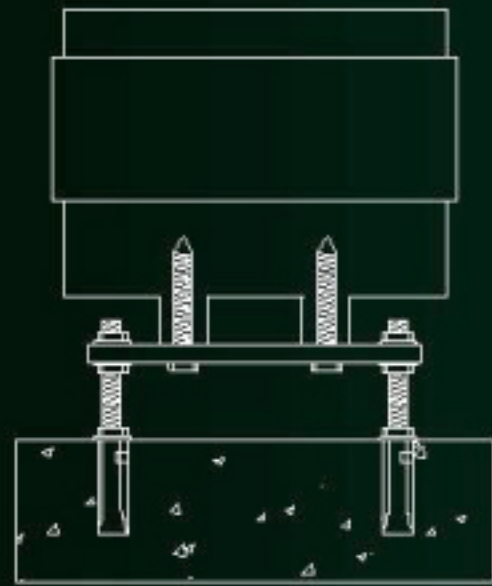
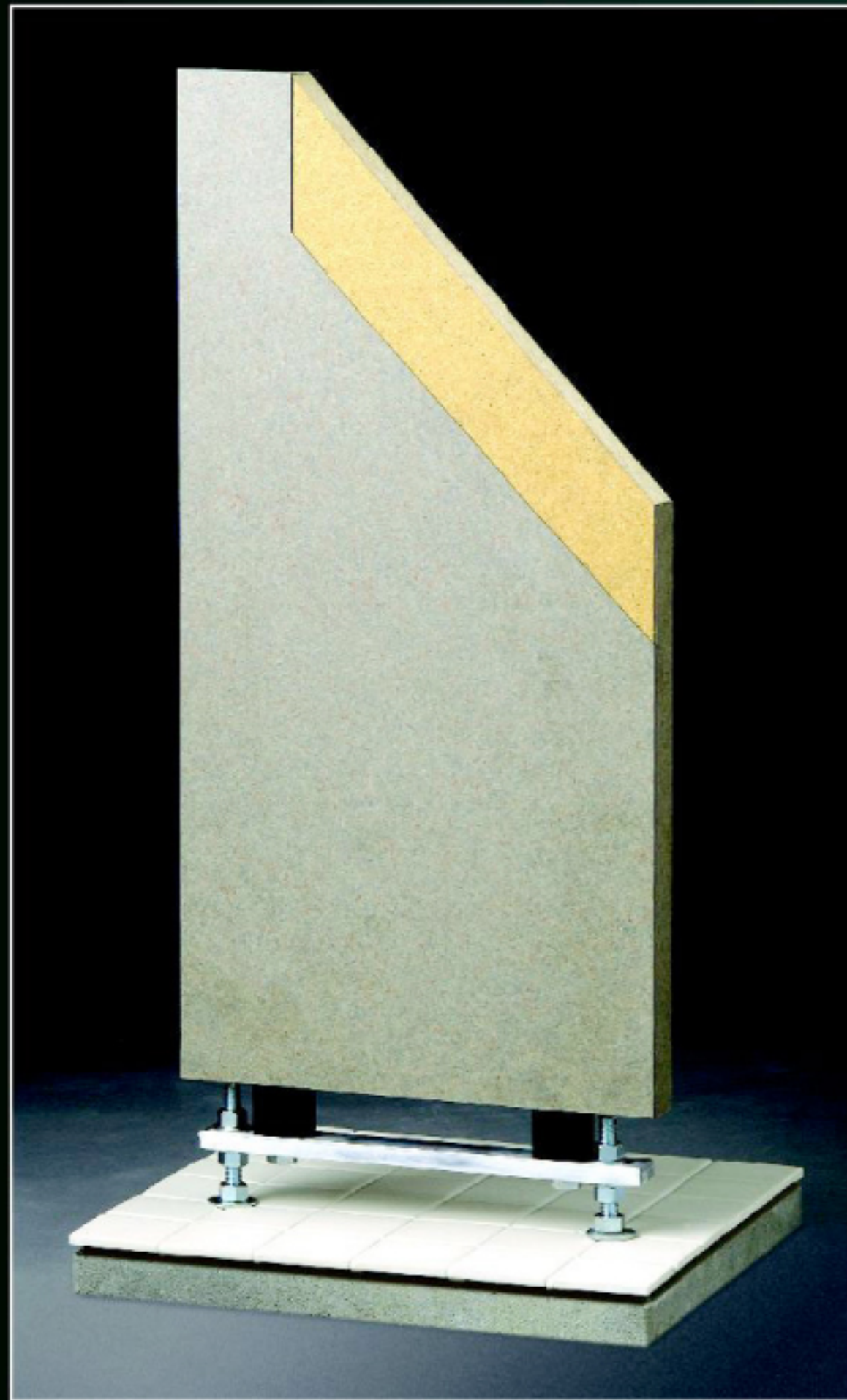
Ceiling Hung Model CHF

This style compartment provides an attractive appearance with a clean open design at the floor, to facilitate maintenance. Used in conjunction with wall hung toilets this style is best suited for buildings which have high sanitation requirements. Model CHF can be specified with any of the optional hardware or 11 gauge steel core pilasters. All structural support members are provided by others.



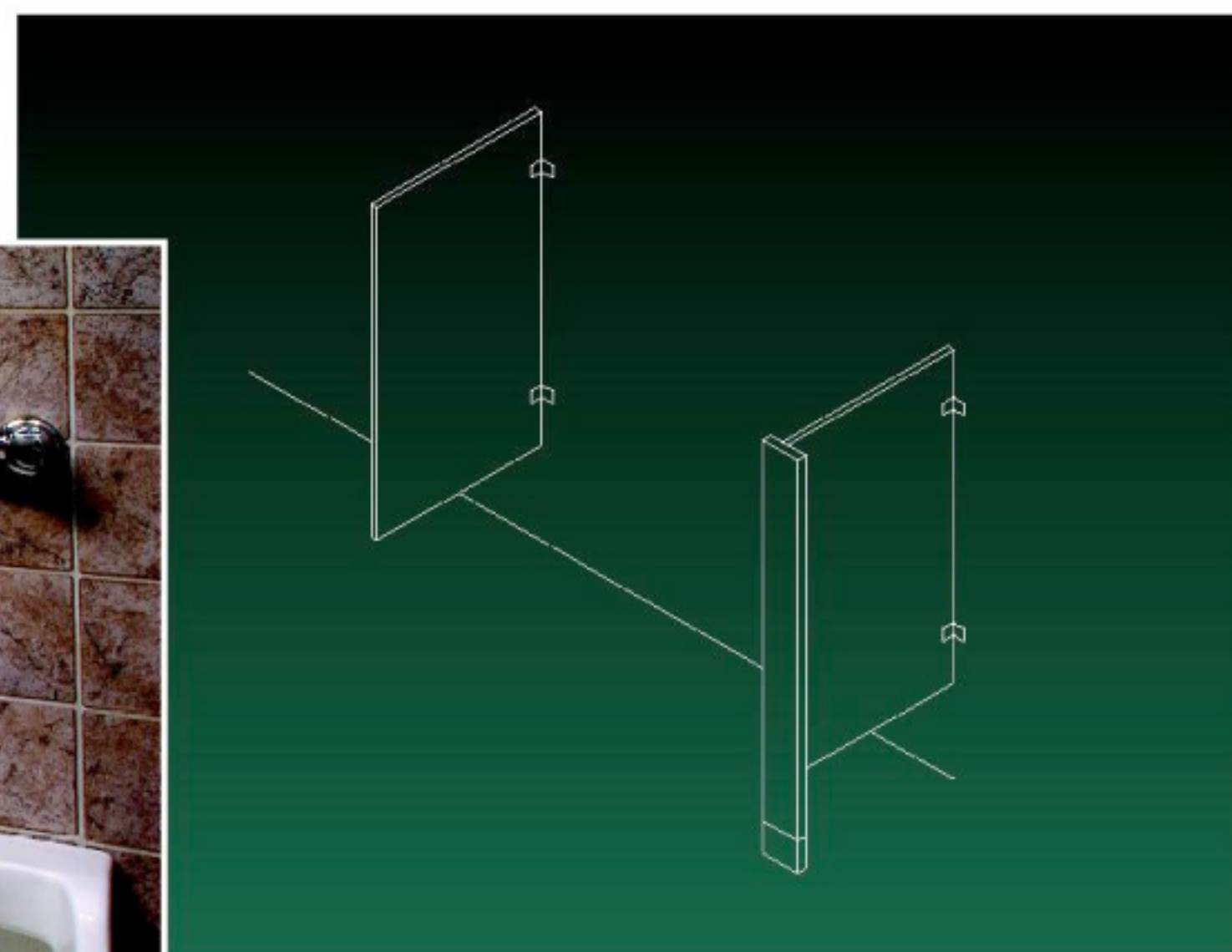
TEX-LAM
Manufacturing, Inc.

Elevation Detail



Tex-Lam's superior floor mounting system provides the most rigid pilaster to floor support in the industry. We fully seal the underside of all laminate clad pilasters to protect against moisture. In addition, we secure the post to the floor using phenolic spacer blocks and an aluminum leveling bar assuring only moisture impervious materials are in contact with wet areas. Optional 11 gauge steel core pilasters are continuous through the post with an attached welded leveling bar at the floor, the underside is laminated to prevent moisture issues. Phenolic pilasters are thru bolted directly to the aluminum leveling bar and have no moisture vulnerability due to the nature of the phenolic product.

Urinal Screens



Choose from Tex-Lam's Model WH – Wall Hung or Model FX – Floor Supported to meet your project specification

TEX-LAM
Manufacturing, Inc.

Color Selections

Tex-Lam laminated plastic and solid phenolic core toilet compartments are available in a wide range of solid colors, abstracts and woodgrains from leading manufacturers.

WILSONART
INTERNATIONAL

FORMICA

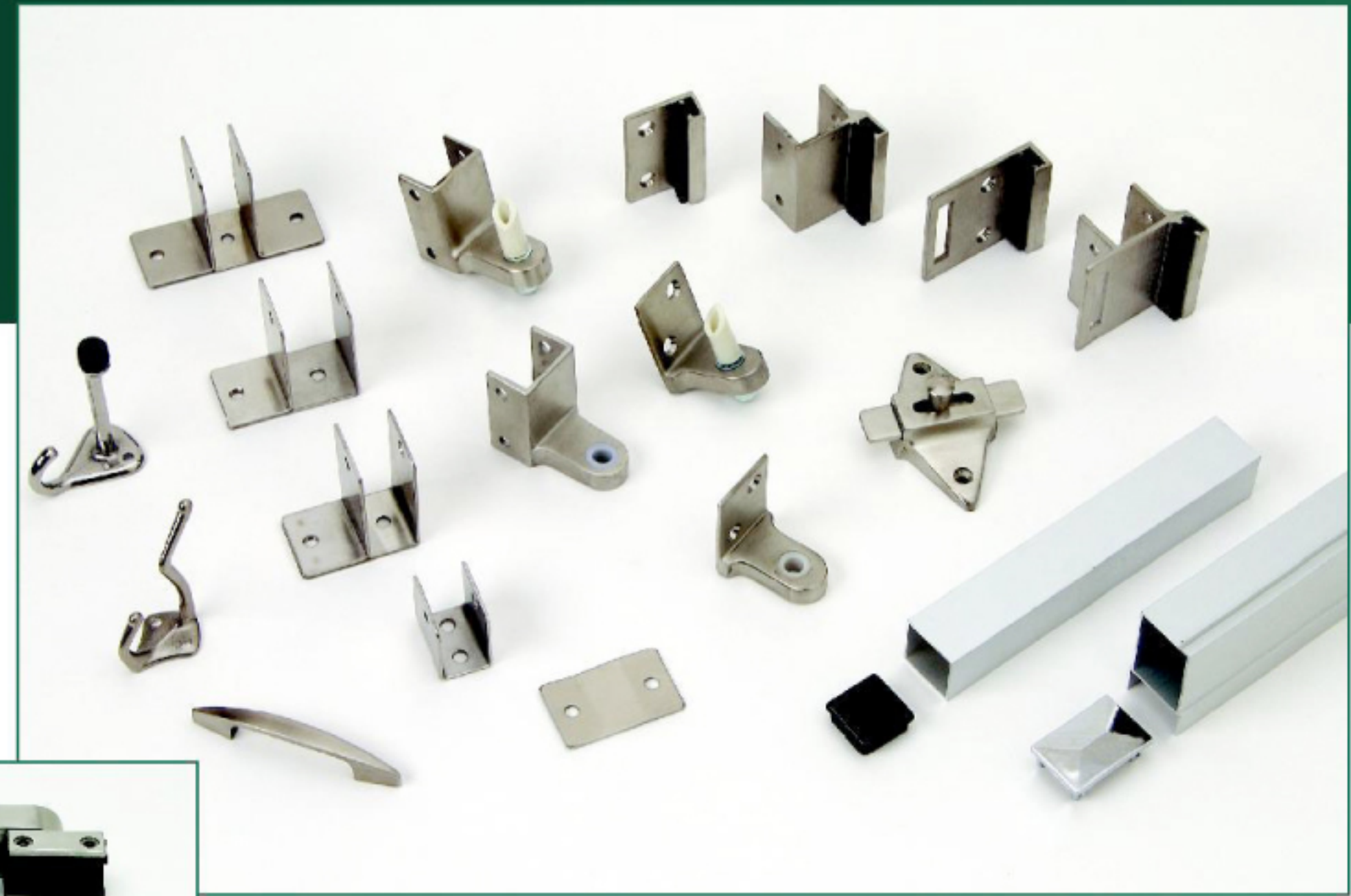
NEVAMAR
DECORATIVE SURFACES

Pionite

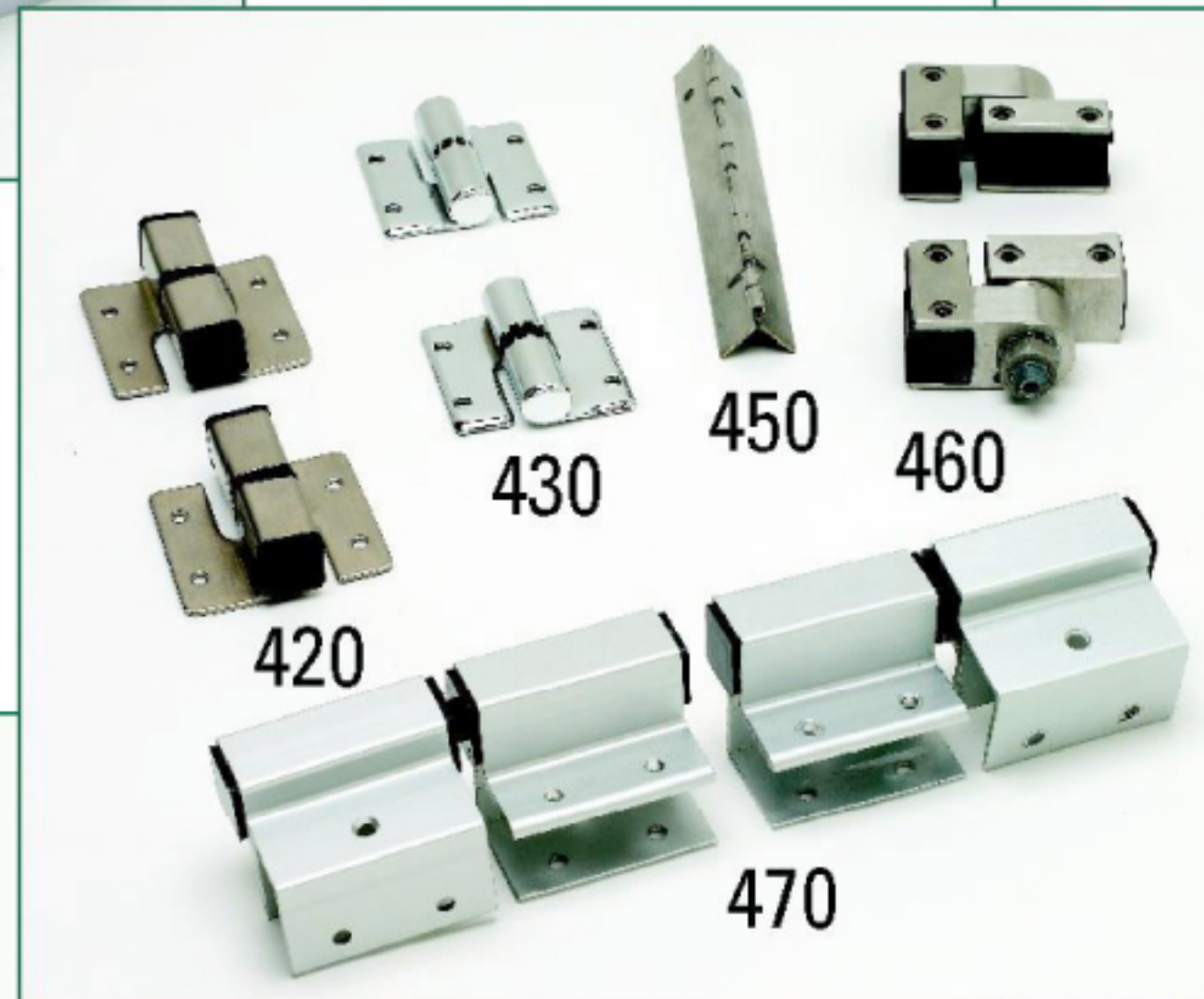
Available Hardware Options



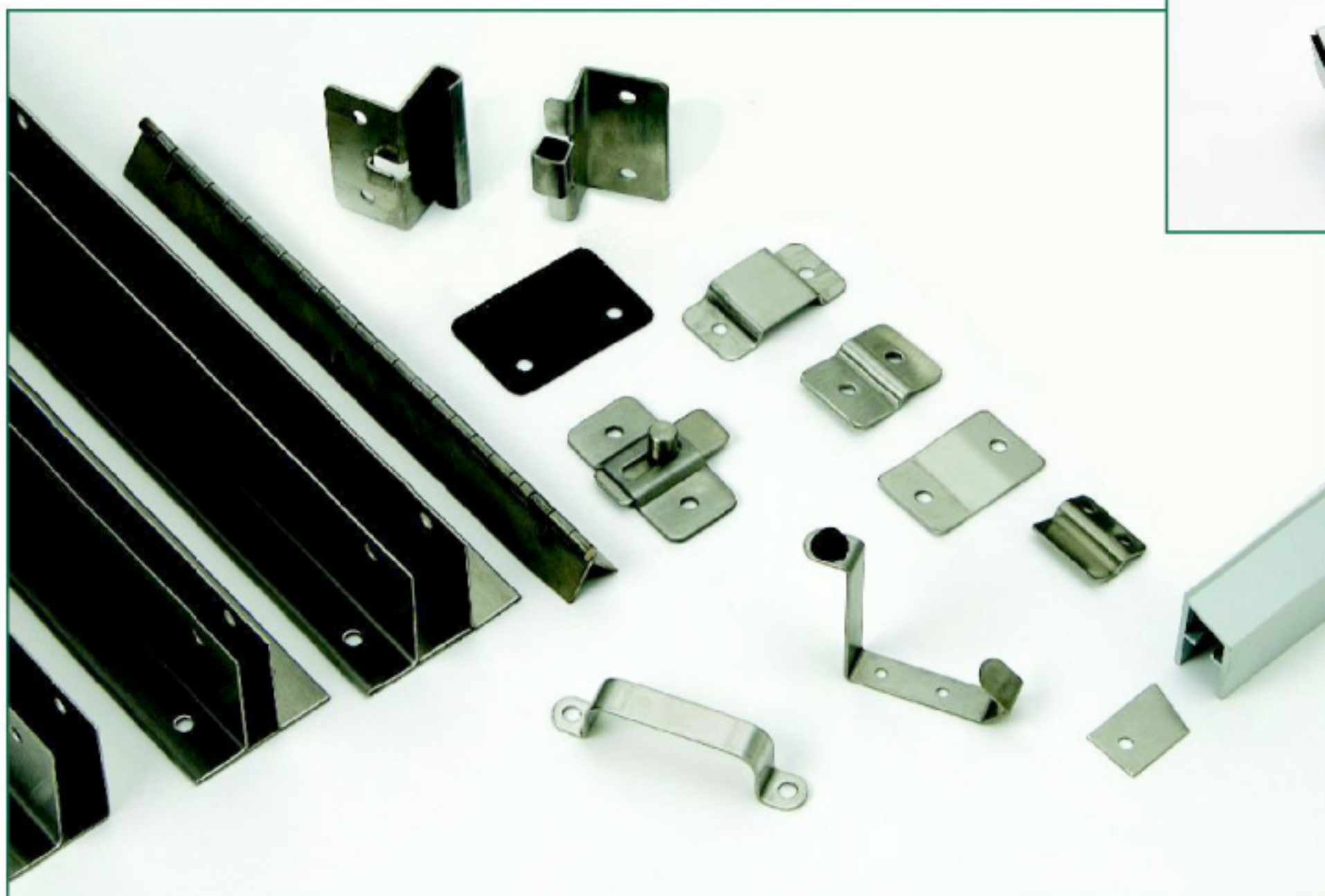
Standard Chrome Plated Zamak



Series 300 Cast & Stainless Steel



**Series 400
Optional
Hardware**



**Series 500 Heavy Duty
Stainless Steel Institutional Hardware**



**Full Length Stainless Steel
and Aluminum Brackets**

Recommended Hardware Applications

Hardware Type	Chrome Zamak Standard Hardware	Chrome Brass Series 100	Full Length Aluminum Brackets	Full Length Stainless Steel Brackets	Cast Stainless Steel Series 300	Surface Mount Stainless Steel Series 450	Heavy Duty Institutional Series 500
Toilet Compartments	S	O	O	O	O	O	O
Urinal Screens	S	O	O	O	O	O	O
Phenolic Core Toilet Compartments	N/A	N/A	O	O	O	S	O
Phenolic Core Dressing Stalls	N/A	N/A	O	O	O	S	O
Phenolic Core Shower Dividers	N/A	N/A	O	O	O	S	O

*S-Standard, O-Optional, N/A-Not Applicable

Warranty

Tex-Lam laminated plastic and solid phenolic core toilet compartments are guaranteed to be free of defects in materials and workmanship for a period of One Year from the date of purchase.

TEX-LAM
Manufacturing, Inc.

Architectural Laminate Doors

Tex-Lam architectural decorative laminate wood doors provide the ultimate value for the construction and commercial industry. The high pressure laminate finish offers an excellent cost effective alternate to wood veneer doors. The physical properties of laminate combine outstanding durability with unlimited design options. Our manufacturing process allows you to effectively meet the requirements of today's construction demands.

The Tex-Lam Advantage

- Preferred rigid set vinyl acetate polymer 3-ply and 5-ply bond between all components
- Excellent maintainability and stain resistance
- No need for on-site sealing, staining or painting which escalates job costs and delays completion

Technical Specifications

- .050" HPDL as standard meeting NEMA LD-3 2000 provides enduring beauty in any application
- Laminated edge-before-face construction, when required, locks in durability and reduces chipping
- All Tex-Lam architectural doors meet or exceed current industry standards A.W.I. 1300, WDMA and WIC 20

Distributed Nationally

Tex-Lam is committed to Quality and on time Delivery. We are actively engaged in product and material development. While the construction details, materials and specifications here are accurate as of this printing, we reserve the right to change designs, specifications, finishes or materials without notice.

TEX-LAM is a registered trademark of Tex-Lam Manufacturing, Inc.

TEX-LAM
Manufacturing, Inc.

7219 Stuebner Airline Road
Houston, TX 77091
Ofc: 713-695-5975
Fax: 713-695-3346
Web: www.texlam.com